

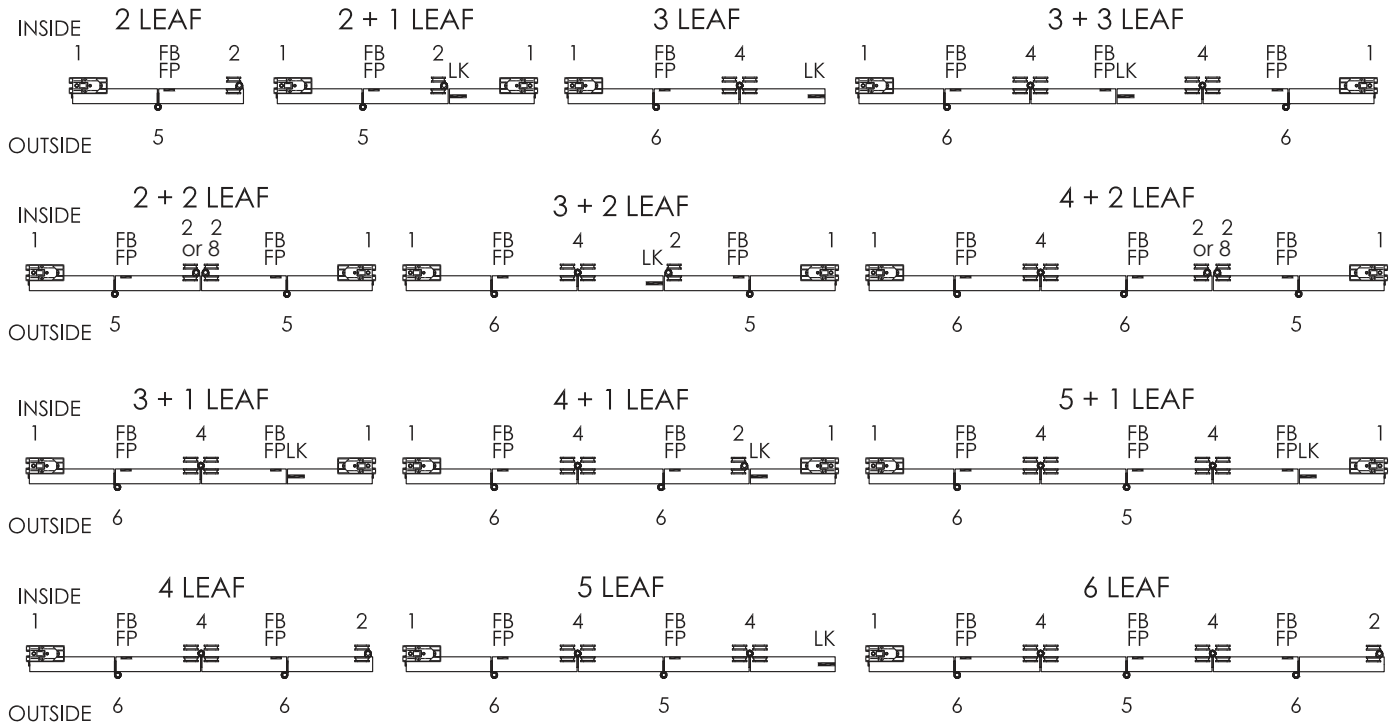
Maximum Weight (kg)
50 / 100

Maximum Width (mm)
1000

Maximum Height (mm)
3000

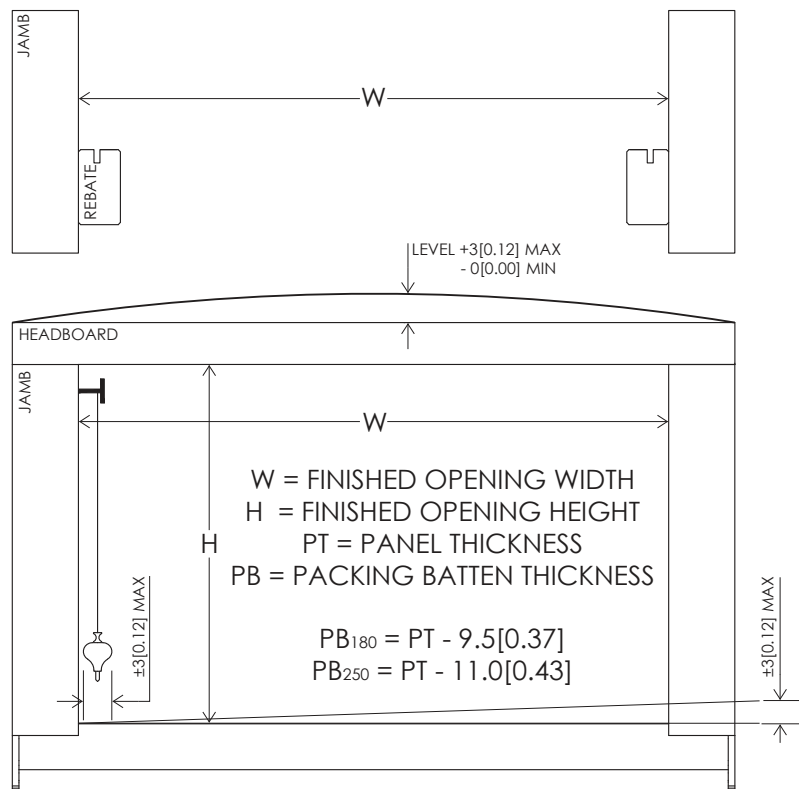
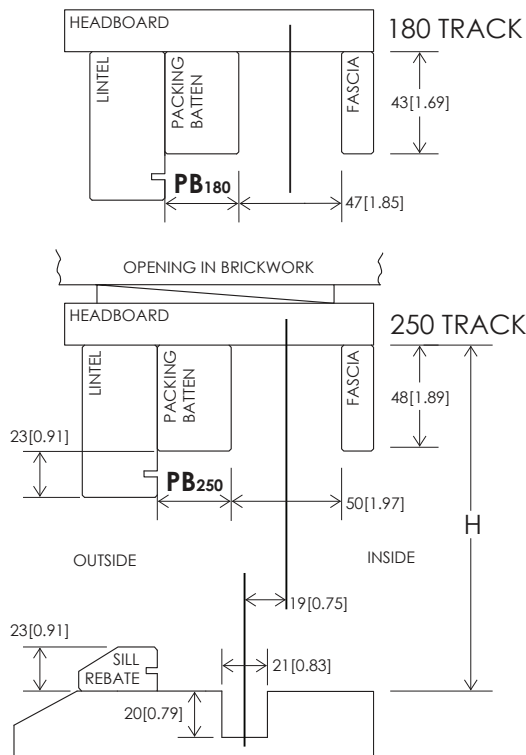
Panel Thickness (mm)
35+

INWARD OPENING



Opening Preparation inward opening system shown, dimensions shown in mm[inches]

180 Track for 50kg(110lbs)
250 Track for 75kg(165lbs) & 100kg(220lbs)

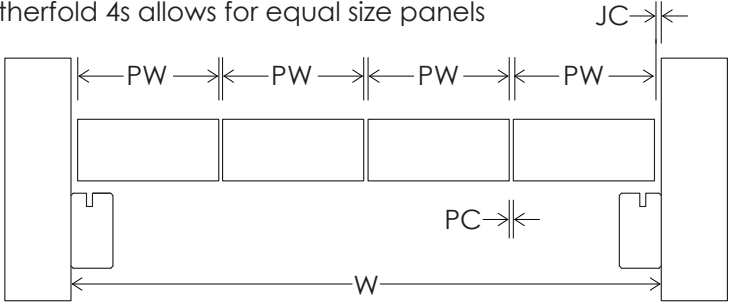


Install Track & Channel as per INSTBWS1 or INSTBWS2

Panel Size Calculation

free leaf width calculator available from Brio (includes BOM & pricing)

Brio Weatherfold 4s allows for equal size panels

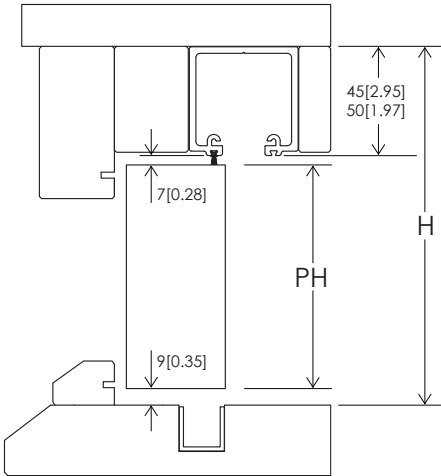


N = No. of Panels
PW = Panel Width
JC = Jamb Clearance = 6[0.24]
PC = Panel Clearance = 4[0.16]

$$PW = \frac{W - [PC(N-1) + 2(JC)]}{N}$$

JC based on panels 850[33.47] wide and 38[1.50] thick

PH = Panel Height

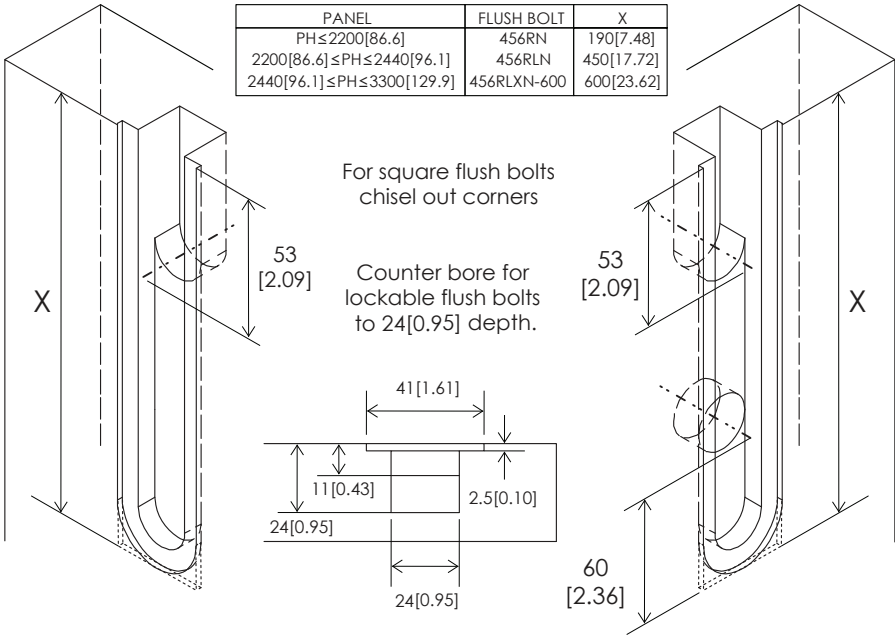


PH180 TRACK = H - 61[2.40]
PH250 TRACK = H - 66[2.60]

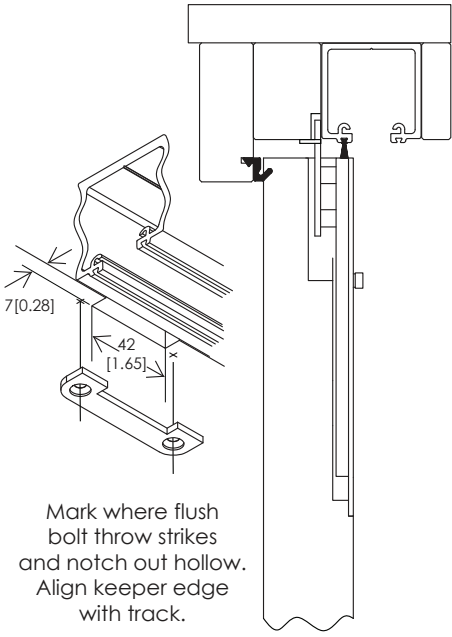
Flush bolt Position

see page 2 for flush bolt location for all configurations, router available

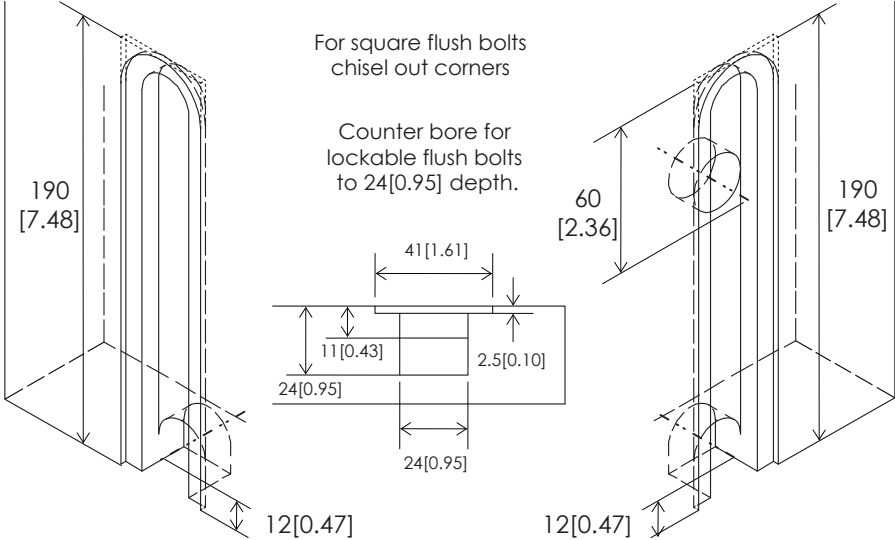
Install 456 'N' Type Offset Flush Bolt for top.



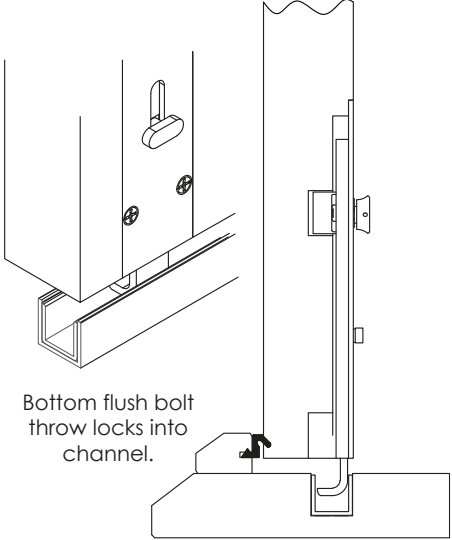
Install keeper to headboard.



Install 456 'I' Type Channel Flush Bolt for bottom (only available in 1 size)



Retaining bottom Flush bolt's throw



Care and Maintenance

Hardware is subject to deterioration from everyday use and from the environment that it is in. In particular, it is important that routine maintenance be carried out in harsh coastal or marine environments and industrial applications.

General

Inspect all fixing bolts for tightness every six months, including those securing brackets. Tighten if necessary. Routinely check for wear and if excessively worn, the part should be replaced.

To help prevent surface corrosion, Brio® recommends washing regularly; even stainless steel finishes in coastal environments may show signs of surface corrosion if not washed regularly. Sheltered areas that are not rain washed are particularly susceptible. Wash with soap or mild detergent and warm water followed by rinsing with clean cold water and wipe dry.

As a guide, if a window or door requires washing then wash the hardware, however Brio® recommend for marine and industrial environments washing a minimum of every 3 months and 6 months for general environments. In coastal or marine environments Brio® recommends applying a light application of corrosion preventative such as CRC Marine 66 or Inox® for Marine, to all surfaces and using a dry cloth to remove excess. When using lubricant or corrosion protection compounds, be careful to avoid the adjacent surfaces and always follow the manufacturer's instructions.

Track

Keep track free from obstruction and excessive dirt or water. Visible surfaces should be cleaned using a damp cloth and mild detergent, then wiped dry.

Where fitting to the outside of the building, it is recommended that the appropriate track is specified.

Hangers & Pivots

All hangers are fitted with lubricated ball-bearings or plain bearings, requiring no greasing. If doors 'settle' and door clearance is reduced causing friction, raise the door by the hanger adjustment nuts.

Wash as per the above recommendation and apply a light application of corrosion preventative to all surfaces, using a dry cloth to remove excess.

Guides

Guide roller and guide channel must be kept clear and free of obstructions.

Wash as per the above recommendation and apply a light application of corrosion preventative to all surfaces, using a dry cloth to remove excess.

Rollers

All bottom rails should be free from obstruction and excessive dirt or water. Visible surfaces should be cleaned using a damp cloth and mild detergent, then wiped dry. All rollers are fitted with sealed precision bearings requiring no maintenance.

Hinges

Visible surfaces should be cleaned using a damp cloth and mild detergent, then wiped dry. Apply a light application of corrosion preventative to all surfaces, using a dry cloth to remove excess. Repeat at intervals no greater than 3 months.

Flush Bolts

Visible surfaces should be cleaned using a damp cloth and mild detergent, then wiped dry. Apply a light application of lubricant to internal mechanisms and bolt using a suitable nozzle-spray.

