

Brio<sup>®</sup>

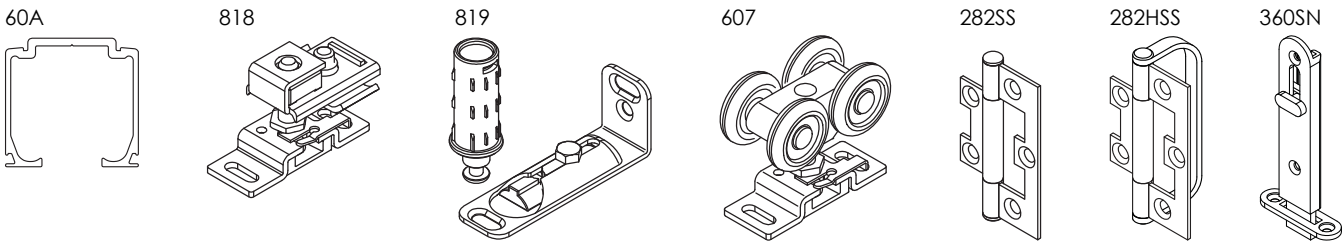
Multifold 30  
Installation Instructions

Requirements Door & Hardware

Capacities  
Check your interior folding doors are within the size & weight capacities of this system.

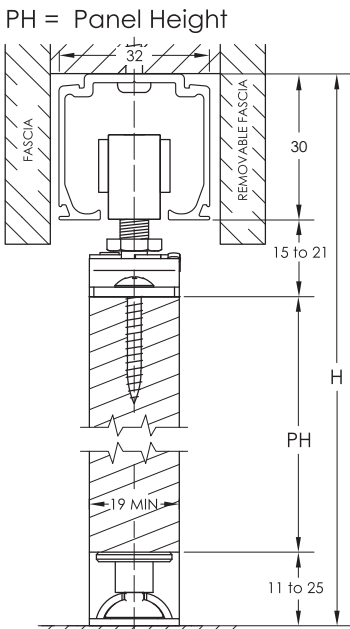
MAXIMUM LEAF HEIGHT	2400mm
MAXIMUM LEAF WIDTH	650mm
MINIMUM LEAF THICKNESS	19mm
MAXIMUM LEAF WEIGHT	30kg

Main Components



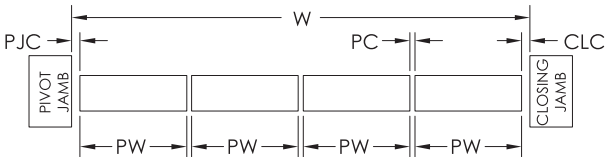
Door Layout	Finish	60A Top Track	818 Top Pivot Set	819 Bottom Pivot Set	607 Top Hanger	282SS Hinge	282HSS Hinge Handle	360SN Flush Bolts	No guidance supplied in 2P or 3P kits. Optional 401 Flush Pulls sold separately		
									92 Guide Threshold	801 Spring Guide	401 Flush Pull
2 Panel layout	SS	1 x 2000mm	1	1	1	2	1	2	0	0	Optional
3 Panel layout		1 x 2000mm	1	1	1	5	1	3	0	0	Optional
4 Panel layout		1 x 3000mm	1	1	2	7	2	4	1 x 3000mm	2	Optional
5 Panel layout		1 x 3500mm	1	1	2	10	2	5	1 x 3500mm	2	Optional
6 Panel layout		1 x 4000mm	1	1	3	12	3	6	1 x 4000mm	3	Optional

Panel Size Calculation



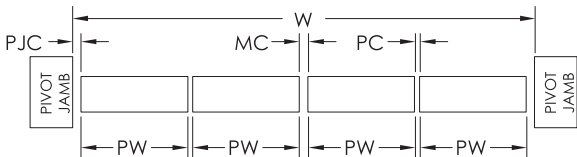
PH = H - 54 min (without guide)  
PH = H - 59 min (with guide)

Multifold 30 allows for equal size panels



N = No. of Panels  
PW = Panel Width  
PJC = Jamb Clearance Pivot End = 6[0.24]  
CJC = Jamb Clearance Closing End = 7[0.28]  
PC = Panel = 1.5[0.06]

$$PW = \frac{W - [(PC(N-1) + PJC + CJC)]}{N}$$

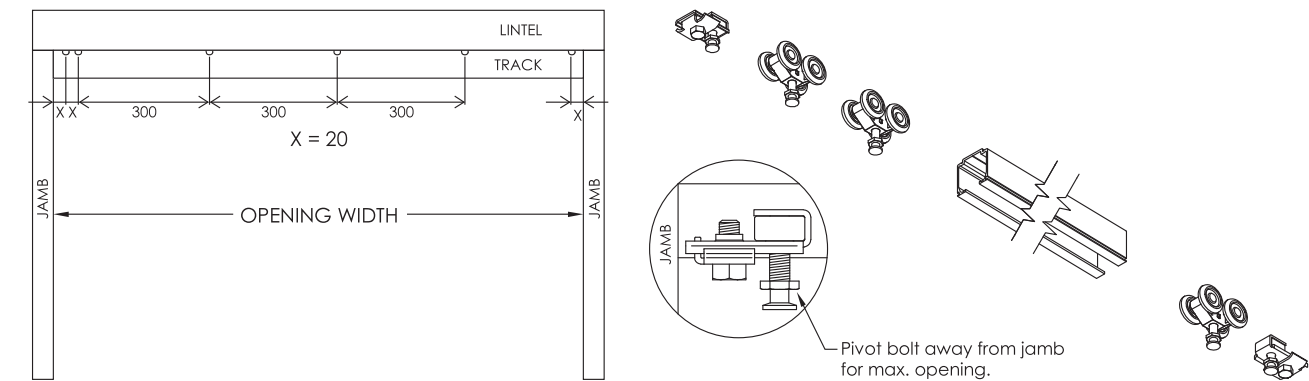


If 2 units meet each other  
MC = Meeting Unit Clearance = 5[0.20]

$$PW = \frac{W - [(PC(N-2) + 2(PJC) + MC)]}{N}$$

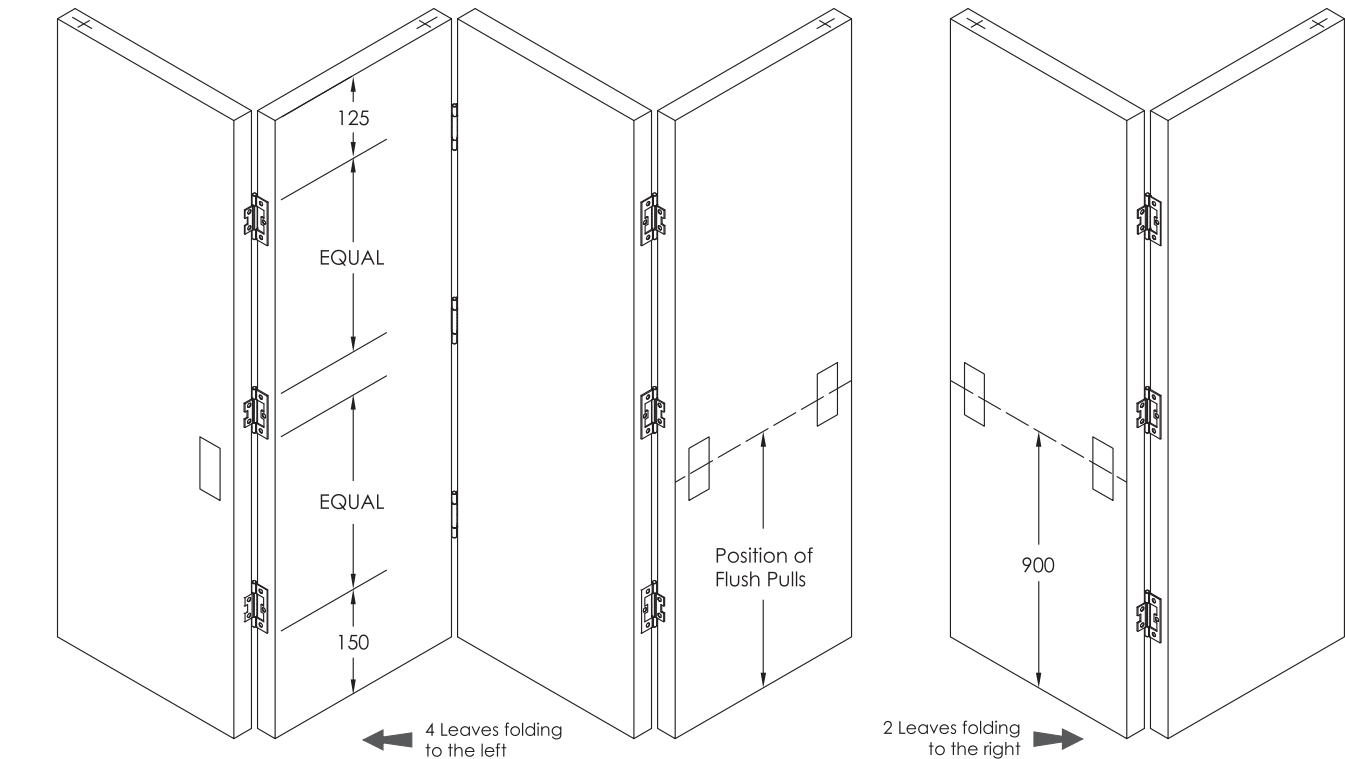
# Install the Track 4 + 2 Leaf End Folding System Shown.

Cut the track to fit opening width between jambs. Insert all hangers, top pivots and door stops required for your application in the correct order into the track. Then screw track into lintel. Clean down inside of track once fixed in position.



# Fit Hardware on Leaves 4 + 2 Leaf End Folding System Shown.

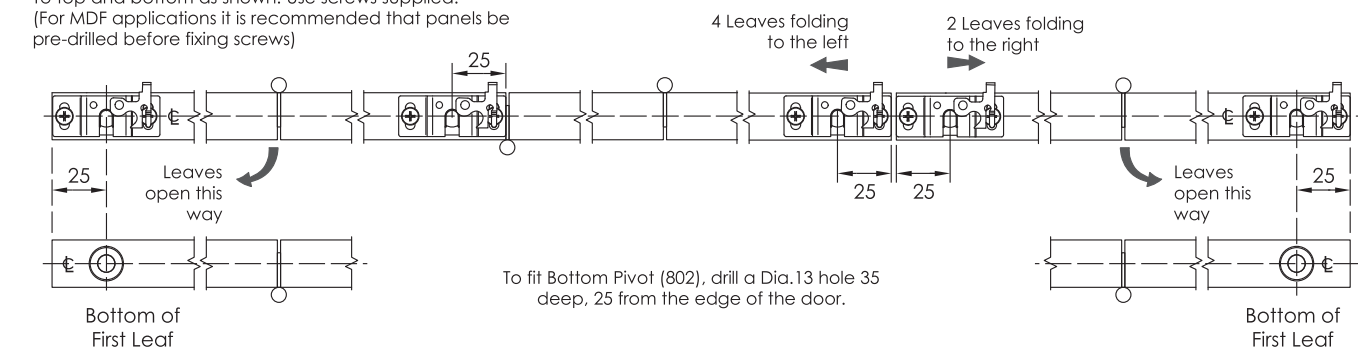
Attach Hinges as shown below  
(For MDF applications it is recommended that panels be pre-drilled before fixing screws)



Position flush pulls as shown in positions shown in Hardware Orientation on page 4.  
If door knobs are preferred, they need not be fitted until the end. Note - on a 5½ or 6 leave unit, door knobs cannot be fitted on the middle leaves. Flush pulls are recommended for these applications. Sold separately.

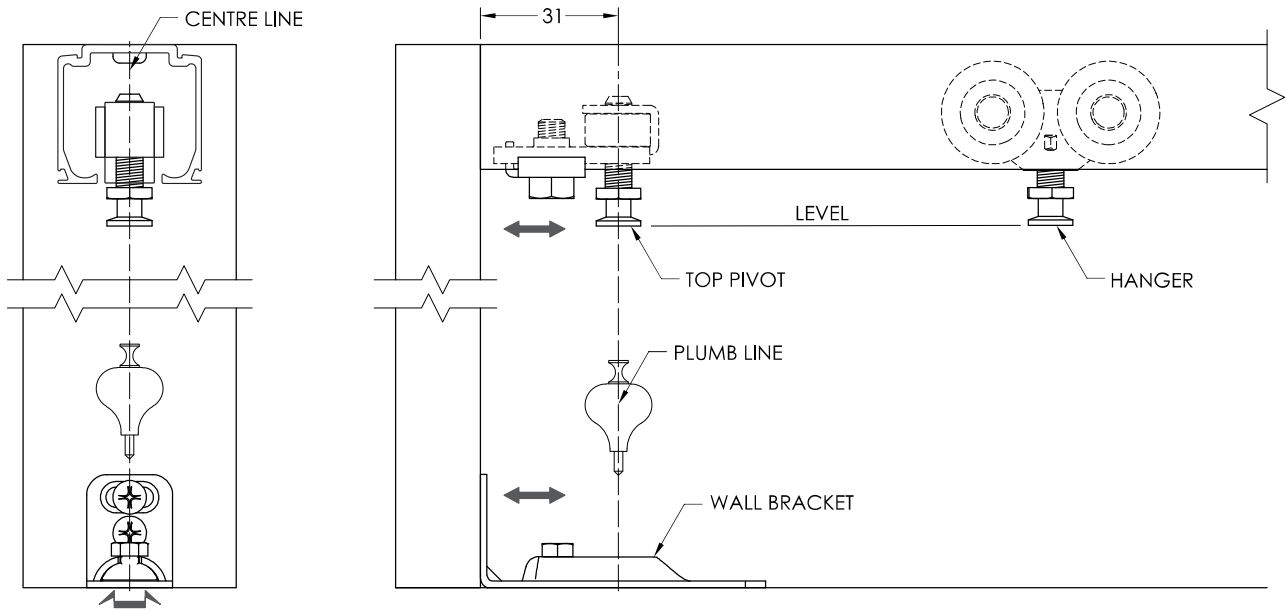
# Fit Pivot and Hanger Plates

To top and bottom as shown. Use screws supplied.  
(For MDF applications it is recommended that panels be pre-drilled before fixing screws)



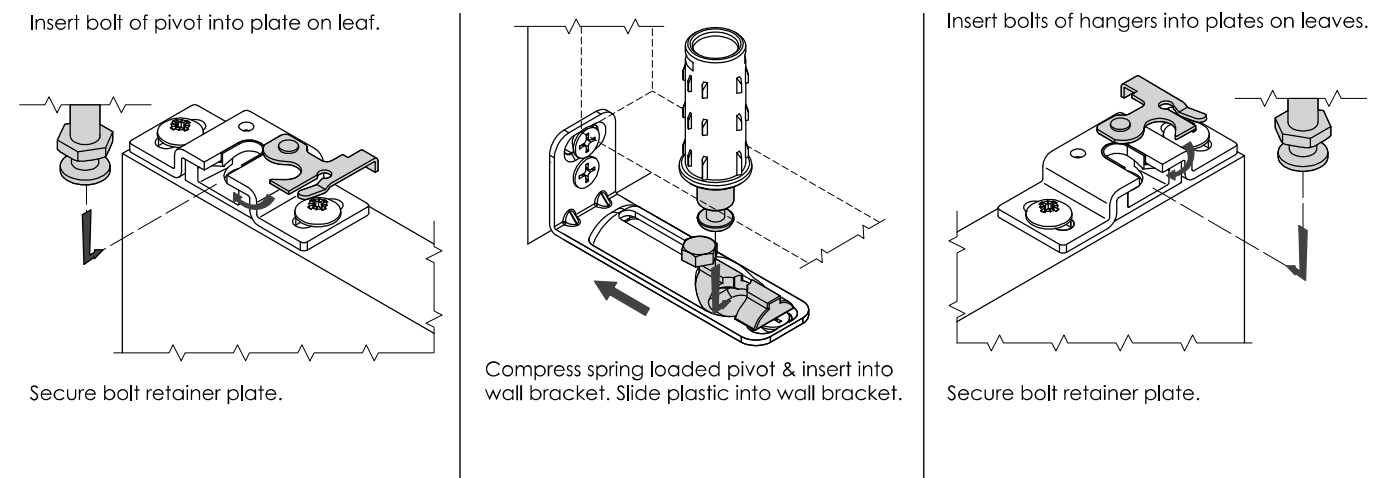
# Position Top Pivot Plate & Wall Bracket

Fit top pivot into position. Centre of floor bracket to be plumb below the centre line of track. Fasten bracket using screws supplied.

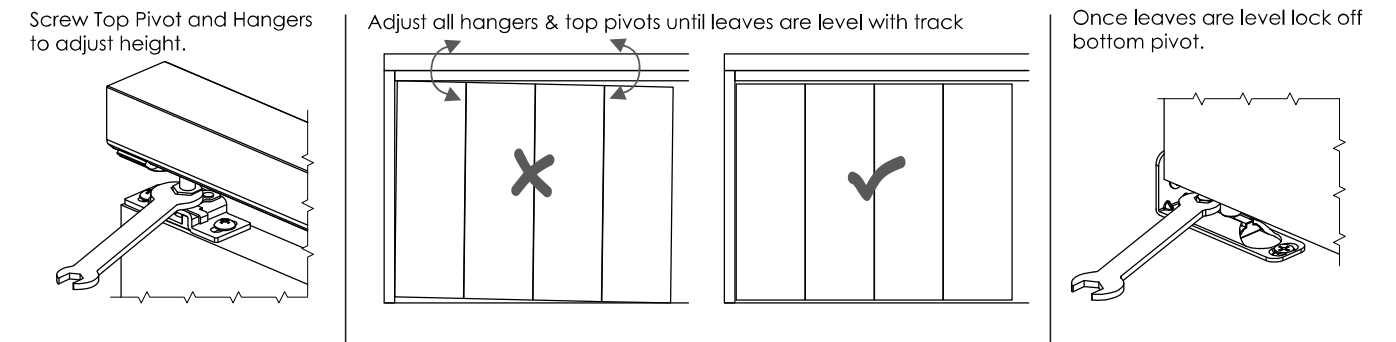


## Fit Leaves

With clips on plates open & plastic of wall bracket protruding



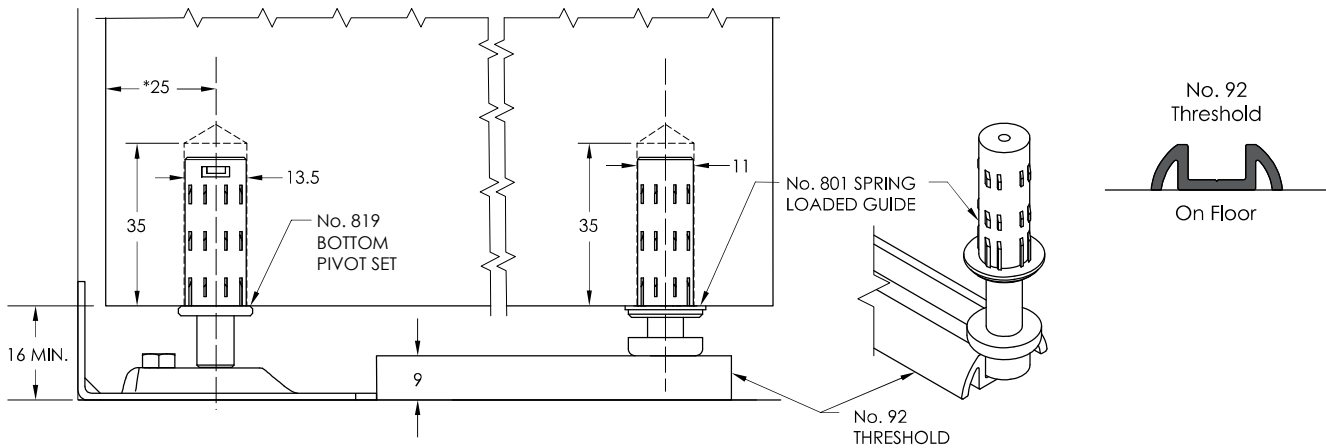
## Adjust Height & Align Leaves



# Floor Guide System

Must be used on end folding units of four leaves or more

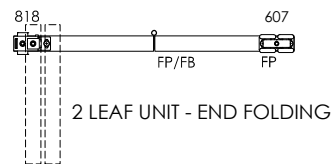
Use surface mounted threshold No. 92, with 801 spring loaded guides on every second leaf.  
Guides must be centred directly below the hanger centerline.



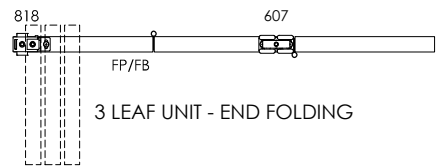
Butt threshold hard up against wall bracket. On units with door width less than 22mm \*25 must be 28mm.

# Door Hardware Set Orientation

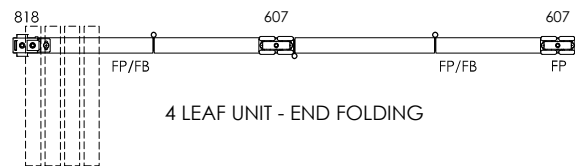
FB = Flush Bolt, FP = Flush Pull. Left systems shown



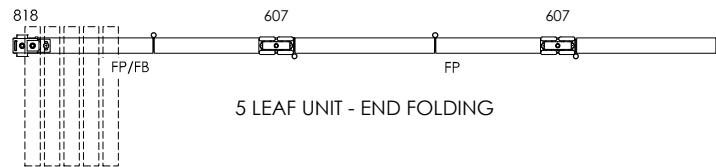
2 LEAF UNIT - END FOLDING



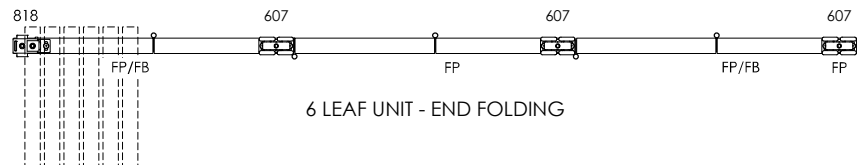
3 LEAF UNIT - END FOLDING



4 LEAF UNIT - END FOLDING



5 LEAF UNIT - END FOLDING



6 LEAF UNIT - END FOLDING



0330 8080 617  
briouk.com  
brio.sales.uk@allegion.com