



## Interfold 50F Kits Non Mortice Hinges

Interfold 50F is a robust, stainless steel-based, top hung folding system designed specifically for heavy-duty interior timber doors, without a floor-mounted guide channel. This exceptional hardware system confidently supports doors of equal width up to an impressive 50kg. With 4 stylish finish options available, it offers a perfect fit for every style.

Stainless steel non-mortice hinges deliver outstanding strength and feature an effortless face fix fitting that requires no door preparation at all.

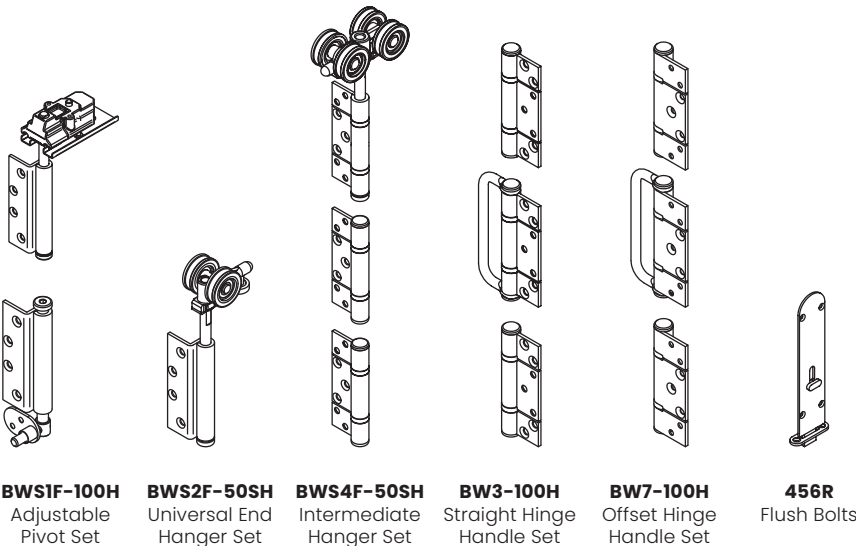
Top hangers are engineered with sealed bearings for unmatched durability and stability, complemented by grooved nylon wheels that ensure a smooth, silent operation. Plus, they feature the cutting-edge 'set & forget' push-button system, allowing for effortless height adjustments at every pivot and hanger position.

Available as simple to use kits, Interfold 50F is your go-to solution for effortlessly integrating heavier, solid wood doors with the unmatched reliability and quality that Brio folding systems are renowned for.

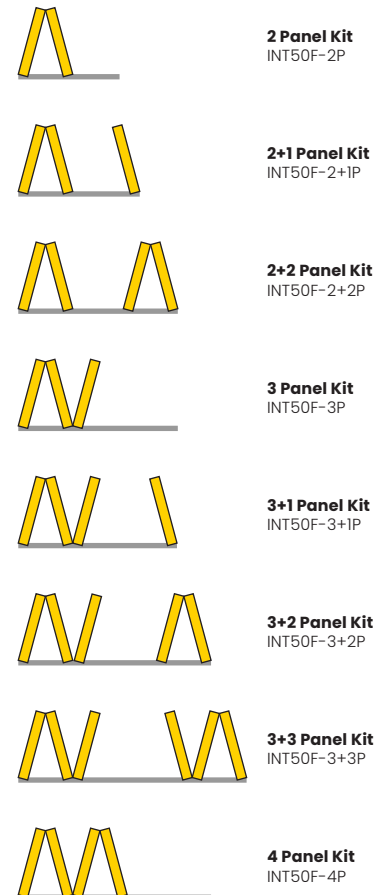
**Note:** For systems requiring taller panels or inward folding layouts then please call for further details.



### Main Hardware Components



### Kit Layouts & Codes



### Available Finishes



Maximum Weight (kg)  
**50**

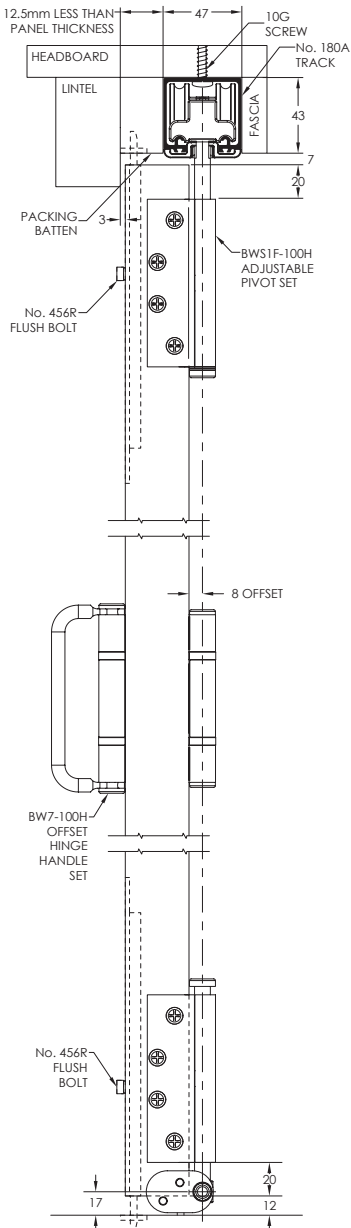
Maximum Width (mm)  
**838**

Maximum Height (mm)  
**2200**

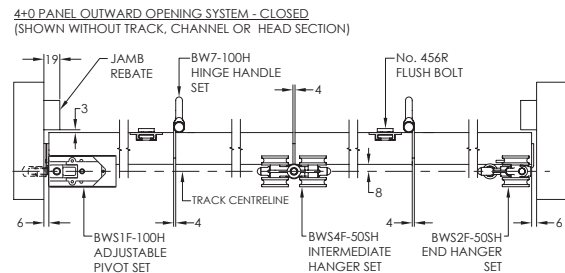
Panel Thickness (mm)  
**35-56**

Product Description	Track Length	Finish	BWS1F-100H Adjustable Pivot Set	BWS2F-50SH Universal End Hanger Set	BWS4F-50SH Intermediate Hanger Set	BW7-100H Offset Hinge Handle Set	BW3-100H Straight Hinge Handle Set	456R Flush Bolts
INT50F-2P	2000mm x 1	SS BLK PB PS	1	1	0	0	1	2
INT50F-2+1P	3000mm x 1		2	1	0	0	1	2
INT50F-2+2P	3500mm x 1		2	2	0	0	2	4
INT50F-3P	3000mm x 1		1	0	1	1	0	3
INT50F-3+1P	3500mm x 1		2	0	1	1	0	5
INT50F-3+2P	2000mm x 1 2500mm x 1		2	1	1	1	1	5
INT50F-3+3P	2500mm x 1 3000mm x 1		2	0	2	2	0	8
INT50F-4P	3500mm x 1		1	1	1	2	0	4

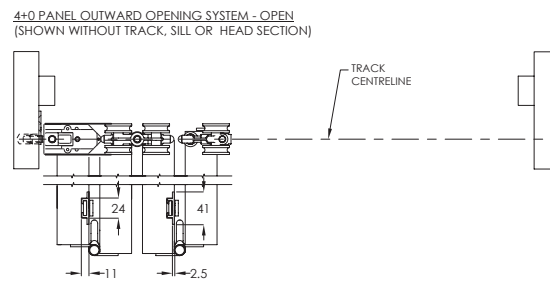
### End Elevation



### Plan Elevation Closed



### Plan Elevation Open



### Front Elevation

